



ISSN: 0976-3376

Available Online at <http://www.journalajst.com>

ASIAN JOURNAL OF  
SCIENCE AND TECHNOLOGY

Asian Journal of Science and Technology  
Vol. 11, Issue, 04, pp.10880-10882, April, 2020

## RESEARCH ARTICLE

### MATERIAL CHARACTERIZATION OF EXUDATES FROM BRAZILIAN CONTEMPORARY OIL PAINTING BY FTIR, PY-GC/MS AND SEM-EDS

<sup>1,\*</sup>Redígolo M. M., <sup>1</sup>Alves, M. V. R., <sup>2</sup>dos Reis, T. R., <sup>2</sup>Carneiro, T. C., <sup>1</sup>Costa, I. and <sup>1</sup>Bustillos, O. V.

<sup>1</sup>Instituto de Pesquisas Energéticas e Nucleares (IPEN/CNEN), Av Prof Lineu Prestes, 2242 – 05508-000 - São Paulo, SP - Brazil

<sup>2</sup>Nucleo de Restauro, Pinacoteca do Estado de São Paulo, Praça da Luz, 2 – 01120-010 - São Paulo/SP – Brazil

#### ARTICLE INFO

##### Article History:

Received 11<sup>th</sup> January, 2020

Received in revised form

14<sup>th</sup> February, 2020

Accepted 08<sup>th</sup> March, 2020

Published online 30<sup>th</sup> April, 2020

##### Key words:

Dripping Paint, Marina Saleme, Fourier Transform Infrared Spectroscopy, Pyrolysis gas Chromatography Mass Spectrometry, Scanning Electron

#### ABSTRACT

Contemporary art has employed almost every single synthetic material created by man. Nonetheless, the appeal of oil paint is still present at most public and private collections. Oil paint manufacture has evolved over time along with its formulation and conservation concerns. A reported problem is the formation of exudates on contemporary oil paintings. This work aims to characterize exudates from the Brazilian oil painting “Três pessoas” (1999), by Marina Saleme. Characterization was carried out by Fourier transform infrared spectroscopy, pyrolysis coupled to gas chromatography and mass spectrometry and scanning electron microscopy coupled to energy dispersive x-ray fluorescence spectrometry. Results indicate that exudates are formed by the oxidation of linseed oil and formation of dicarboxylic acids. This process is aided by the formation of zinc stearate in the paint film.

**Citation:** Supatra Sen. 2020. “Material characterization of exudates from Brazilian contemporary oil painting by FTIR, Py-GC/MS and SEM-EDS”, *Asian Journal of Science and Technology*, 09, (08), 10880-10882.

**Copyright** © 2020, Supatra Sen. This is an open access article distributed under the Creative Commons Attribution License, which permits unrestricted use, distribution, and reproduction in any medium, provided the original work is properly cited.

## INTRODUCTION

Contemporary art embodies a multitude of materials, such as polymers (polystyrene, polyvinyl acetate), metal alloys, electronic devices (VHS, cassettes, Betamax) and acrylic paints (even fluorescent ones, more recently). Nevertheless, oil paint is still in use. A survey at British Tate Museum showed that 70% of all the twentieth century painting collection is composed of oil (P. Smithen, 2005). Although stability and optical parameters have improved, some problems have surfaced. Several paintings, that now arrive at the studios of restorers for the first time, show efflorescence or exudate formation, that is, material resinous drops which are expelled from the paint layer. The exudate formation in contemporary oil paintings is a worldwide problem, as reported in works from Jean-Paul Riopelle (M. Corbeil *et al.*, 2004), Erik Oldenhof (S. Bayliss *et al.*, 2016) and Mark Rothko (C. Mancusi-Ungaro, 1990). The pioneering works of MOLART and De Mayerne Dutch groups first reported this issue (P. Noble, 2019).

This phenomenon interests not only conservators and museologists, but also gallery owners for the economic impact of the paintings’ deterioration. The drips formed over time above the paint layers alters viewers’ perception greatly and, also, leads to delamination and sticky surfaces. To date, no satisfactory long-term treatment for this issue has been proposed (I.M.A. Bronken *at al.*, 2019). Thus, studies on material characterization of exudates are essential to better understand the causes and perspectives on the conservation of contemporary oil paintings. This work presents the characterization of exudates from the painting “Três pessoas” by Marina Saleme (1999) (Fig. 1), which is part of the contemporary paintings collection at Pinacoteca do Estado de São Paulo museum. Marina Saleme is a renowned Brazilian artist whose work has been exhibited, not only in Brazil, but also in Spain, Colombia and Canada. Throughout her career, Saleme shows a predilection for oil paint abstract diptychs and triptychs, such as the one presented in Figure 1.

## Experimental

Paint sample was collected on site with the aid of a scalpel and swabs for the yellow-brown transparent exudate (Fig. 2). Sampling points are highlighted on figure 1 as white circles on the left side of the image. Then, all samples were analyzed on benchtop equipment at the laboratory.

\*Corresponding author: Redígolo M. M.,

Instituto de Pesquisas Energéticas e Nucleares (IPEN/CNEN), Av Prof Lineu Prestes, 2242 – 05508-000 - São Paulo, SP – Brazil.



Figure 1. “Três pessoas”, Marina Saleme, 180 x 300 cm, 1999



Figure 2. Paint layers and exudate sampling from the painting “Três pessoas”

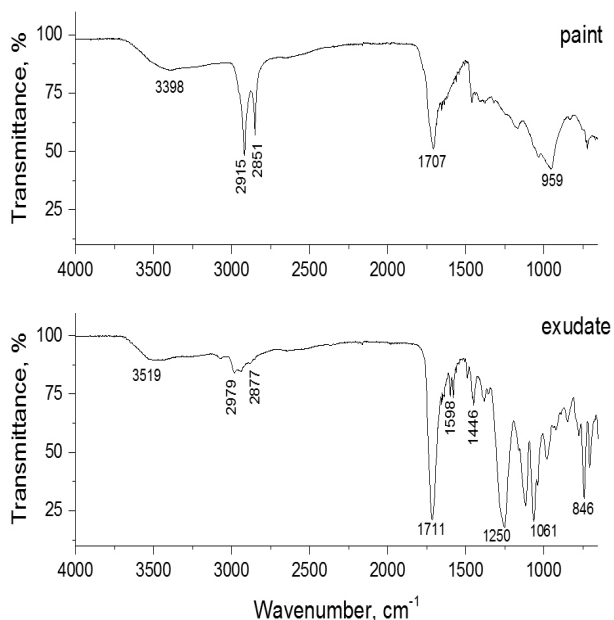


Figure 3. FTIR spectrum showing peaks characteristic for oil binder and carboxylic acid

In order to identify the binder, Fourier transform infrared spectroscopy (FTIR) was employed. Pyrolysis coupled with gas chromatography and mass spectrometry (Py-GC/MS) identified the oil type and other organic components in the paint sample. Lastly, scanning electron microscopy coupled with energy dispersive x-ray fluorescence spectroscopy

(SEM-EDS) was used to characterize the inorganic elemental composition and particle (extenders) distribution.

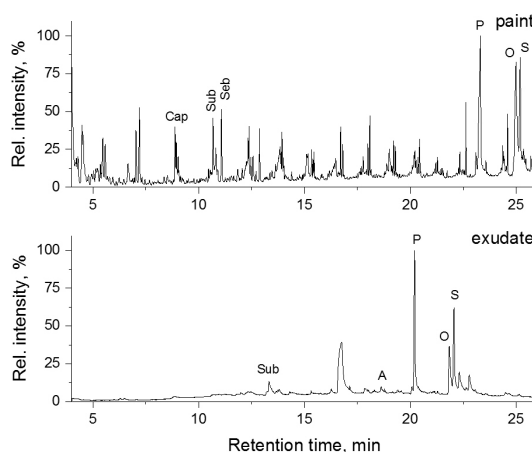


Figure 4. Py-GC/MS chromatogram indicating the presence of linseed oil and dicarboxylic acids

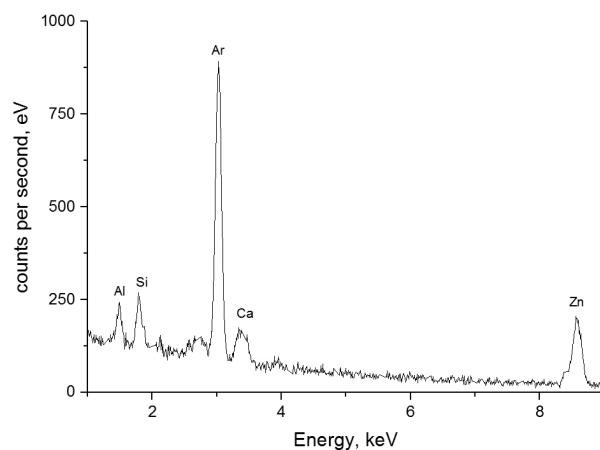
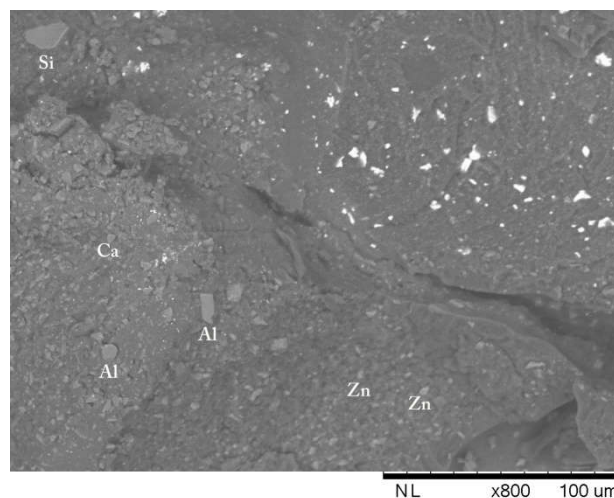


Figure 5. EDS spectrum indicating the presence of Na, Al, Si, Ca and Zn



Infrared (FTIR) spectra were collected on an Agilent Cary 630, ATR mode, from 4000 to 650  $\text{cm}^{-1}$  and for 32 scans with a resolution of 4  $\text{cm}^{-1}$ . The Py-GC/MS instrument used was a Frontier Lab PY-3030D microfurnace pyrolyzer coupled to a Shimadzu Co. GCMS-QP5000 working with SGE BPX5

column 5% phenyl polysilphenylene-siloxane (30 m x 0.25  $\mu\text{m}$  x 0.25 mm). Pyrolysis was performed at 610  $^{\circ}\text{C}$  for 0.20 min with Py-GC interface at 300  $^{\circ}\text{C}$  and GC-MS interface at 280  $^{\circ}\text{C}$ . The GC oven temperature was 40  $^{\circ}\text{C}$  (held for 2 min.) with a 10  $^{\circ}\text{C min}^{-1}$  rate and final temperature of 350  $^{\circ}\text{C}$  (2 min). The MS split was 1:150 and the m/z was scanned from 40 to 600 u in electron ionization mode (EI+, 70 eV). Spectra were compared to NIST library standards and the works of S. Tsuge *et al.* (2011) and T. Learner (2004). The TM3000 (Hitachi Co.) scanning electron microscope coupled with a Quantax70 energy dispersive X-ray fluorescence spectrometer (Bruker Nano GmbH) was used for SEM-EDS analyses, working at 15 kV and 5.1 mm distance.

## RESULTS AND DISCUSSION

According to the artist herself, the preferred medium is oil. Each painting being composed of several layers. The paint binder was identified by FTIR (Fig. 3) with characteristic peaks for  $\nu\text{O-H}$  (3398  $\text{cm}^{-1}$ ), non-aromatic  $\nu\text{C-H}$  (2915 and 2851  $\text{cm}^{-1}$ ), free fatty acids carbonyl  $\nu\text{C=O}$  (1707  $\text{cm}^{-1}$ ) and out of plane  $\omega\text{C-H}$  (959  $\text{cm}^{-1}$ ). Exudate samples were analyzed separately, with characteristic peaks for  $\nu\text{O-H}$  (3519  $\text{cm}^{-1}$ ), non-aromatic  $\nu\text{C-H}$  (2977 and 2877  $\text{cm}^{-1}$ ), free fatty acid  $\nu\text{C=O}$  (1711  $\text{cm}^{-1}$ ), zinc carboxylate  $\nu\text{ZnCOO}$  (1598  $\text{cm}^{-1}$ ), asymmetric carbonate  $\nu\text{CO}_3^{2-}$  (1446  $\text{cm}^{-1}$ ),  $\nu\text{C-O}$  (1250  $\text{cm}^{-1}$ ), symmetric carbonate  $\nu\text{CO}_3^{2-}$  (1061  $\text{cm}^{-1}$ ) and  $\delta\text{CO}_3^{2-}$  (846  $\text{cm}^{-1}$ ) (D. Banti *et al.*, 2008). Comparing results from paint and exudate, it is possible to observe the presence of several polar species (intense sharp peaks) in exudate, such as free fatty acids (FFA) carbonyl, carboxylates and ester ( $\nu\text{C-O}$ ). Linseed oil was, then, identified by Py-GC/MS (Fig. 4) using the P/S ratio, i.e. palmitate to stearic acid (P/S = 1.78). The presence of caproic (Cap) and oleic acids (Ole) are noted at 8.5 and 22.7 minutes, respectively. Dicarboxylic acids are also present in paint samples, such as subaric (Sub) and sebacic (Seb), respectively at 10.9 and 11.9.

Results for the exudate sample indicates the presence of palmitic, stearic and oleic acids and dicarboxylic subaric and azelaic acids. Elemental composition was determined by EDS spectrometry (Fig. 5) on paint samples. Al, Si, Ca and Zn were detected, which indicate the presence of kaolin ( $\text{Al}_2\text{Si}_2\text{O}_5(\text{OH})_4$ ) and calcium carbonate ( $\text{CaCO}_3$ ) as extenders. Zinc is present in the paint layer as an oxide (ZnO) white pigment. Exudate (drip) formation is associated to the presence of a mobile polar fraction in the paint film. A fraction of less unsaturated triglycerides fails to anchor on surface particles (I.M.A Bronken *et al.*, 2019). When this occurs on internal layers, paint softening is observed. The presence of dicarboxylic acids is an indicative of degradation (oxidation) of linseed oil binder (F.C. Izzo *et al.*, 2014). Their presence is confirmed by FTIR and Py-GC/MS analyses. Zinc stearate is known to cause cohesion problems in the paint films, although being added to oil paints as hue control. This is a recurrent issue in twentieth century oil paintings (K. Helwig *et al.*, 2014). Micrograph (Fig. 6), at 100  $\mu\text{m}$  scale, indicates high particle-binder ratio, with zinc and calcium as small particles present throughout the paint layer. Aluminum and silicon are present as larger particles of different sizes.

## Conclusion

Spectra from FTIR indicated the presence of oil as paint medium and calcium carbonate as extenders, Py-GC/MS

indicated the presence of linseed oil and dicarboxylic acids (azelaic, suberic and sebacic) and SEM-EDS indicated the presence of kaolin, calcium carbonate and zinc white. Therefore, results indicate that the exudate formation may be caused by the oxidation of linseed oil leading to the formation of dicarboxylic acids. The presence of zinc white aggravates the problem with formation of a metal stearate. As indicated by A. Sawicka (2014), metal soap protrusions (exudate) can be removed using a pH-controlled metal detergent (EDTA) solution, which reduces light scattering rendering the exudate transparent.

## Acknowledgments

The authors are grateful to the CNPq National Council of Scientific and Technologic Development for supporting this project and to the Center for Lasers and Applications' (CLA) Multiuser Facility at IPEN-CNEN/SP

## REFERENCES

- Banti, D., La Nasa, J., Tenorio, A.L., Modugno, F., van den Berg, K.J., Lee, J., Ormsby, B., Burnstock, A., Bonaduce, I. 2008. A molecular study of modern oil paintings: investigating the role of dicarboxylic acids in the water sensitivity of modern oil paints, *RSC Adv.*, vol. 8, pp. 6001-6012.
- Bayliss, S., van den Berg, K.J., Burnstock, A., de Groot, S., van Keulen, H., Sawicka, A. 2016. An investigation into the separation and migration of oil in paintings by Erik Oldenhof, *Microchem. J.*, vol. 124, pp. 974-982.
- Bronken, I.M.A., Boon, J.J., Corkery, R., Steindal, C.C. 2019. Changing surface features, weeping and metal soap formation in paintings by Karel Appel and Asger Jorn from 1946–1971, *J. Cult. Herit.*, vol. 35, pp. 279-287.
- C. Mancusi-Ungaro, (1990), The Rothko Chapel: treatment of the black-form triptychs, *Stud. Conserv.*, vol. 35, p. 134-137.
- Corbeil, M., Helwig, K., Poulin, J. 2004. Analysis of painted oeuvre of Jean-Paul Riopelle: from oil to mixed media, *Stud. Conserv.*, vol. 49, pp. 170-173.
- Helwig, K., Poulin, J., Corbeil, M., Moffatt, E., Duguay, D. 2014. Conservation Issues in Several Twentieth-Century Canadian Oil Paintings: The Role of Zinc Carboxylate Reaction Products, in: *Issues in contemporary oil paint*, K.J. van den Berg *et al.*, Ed, Springer, 2014, pp. 167-184.
- Izzo, F.C., van den Berg, K.J., Keulen, H., Ferriani, B., Zendri, E. 2014. Modern Oil Paints – Formulations, Organic Additives and Degradation: Some Case Studies, in: *Issues in contemporary oil paint*, K.J. van den Berg *et al.*, Ed, Springer, pp. 75-104.
- Learner, T.J.S. 2004. *Analysis of modern paints*, The Getty Conservation Institute.
- Noble, P. 2019. A brief history of metal soaps in painting from a conservation perspective, in: *Metal Soaps in Art*, F. Casadio, K. Keune, P. Noble, A. van Loon, E. Hendriks, S.A. Centeno, G. Osmond (ed.), Springer, pp.1-22.
- Sawicka, A., Burnstock, A., Izzo, F.C., Keune, K., Boon, J.J., Kirsch, K., van den Berg, K.J. 2014. An investigation into the viability of removal of lead soap efflorescence from contemporary oil paintings, in: *Issues in contemporary oil paint*, K.J. van den Berg *et al.*, Ed, Springer, pp.311-332.
- Smithen, P. 2005. A history of the treatment of acrylic paintings, modern paints uncovered. in: *Proceedings of the conference from the Modern Paints Uncovered Symposium*, Learner, T. *et al.* (eds), England: London, pp.165–174.
- Tsuge, S., Othani, H., Watanabe, C.2011. *Pyrolysis - GC/MS Data Book of Synthetic Polymers*, Elsevier.